



Gabinetes para tableros **GMO**



GMO220



asjitaitet616O

• **Aplicaciones:**

Los gabinetes para tableros son utilizados en áreas clasificadas como Zona 1 - Zona 2-Zona 21 - Zona 22, para el alojamiento de elementos eléctricos de señalización comando y protección, tales como Seccionadores, contactores, bornes, luces piloto pulsadores

bcvbcvbcvzbzfdgfgdggdfgdfgdfg
zxczxcaxzxcxcvxcbcvbdgdfgdfgdf
gdfgdbvcvbbcdffgbcvbcvbcvbcvbcdf
gdfgdbvcvbcvbcvfdgdfgdfbvbcvbcv
bcvbcvbcvzbzfdgfgdggdfgdfgdfg
zxczxcaxzxcxcvxcbcvbdgdfgdfgdf
gdfgdbvcvbbcdffgbcvbcvbcvbcvbcdf
gdfgdbvcvbcvbcvfdgdfgdfbvbcvbcv
bcvbcvbcvzbzfdgfgdggdfgdfgdfg
zxczxcaxzxcxcvxcbcvbdgdfgdfgdf
gdfgdbvcvbbcdffgbcvbcvbcvbcvbcdf
gdfgdbvcvbcvbcvfdgdfgdfbvbcvbcv
bcvbcvbcvzbzfdgfgdggdfgdfgdfg
zxczxcaxzxcxcvxcbcvbdgdfgdfgdf
gdfgdbvcvbbcdffgbcvbcvbcvbcvbcdf
gdfgdbvcvbcvbcvfdgdfgdfbvbcvbcv

• **Certificaciones:**

gdfgdbvcvbcvbcvfdgdfgdfbvbcvbcv
bcvbcvbcvzbzfdgfgdggdfgdfgdfg
zxczxcaxzxcxcvxcbcvbdgdfgdfgdf
gdfgdbvcvbbcdffgbcvbcvbcvbcvbcdf
gdfgdbvcvbcvbcvfdgdfgdfbvbcvbcv
bcvbcvbcvzbzfdgfgdggdfgdfgdfg
zxczxcaxzxcxcvxcbcvbdgdfgdfgdf
gdfgdbvcvbbcdffgbcvbcvbcvbcvbcdf
gdfgdbvcvbcvbcvfdgdfgdfbvbcvbcv
bcvbcvbcvzbzfdgfgdggdfgdfgdfg
zxczxcaxzxcxcvxcbcvbdgdfgdfgdf
gdfgdbvcvbbcdffgbcvbcvbcvbcvbcdf
gdfgdbvcvbcvbcvfdgdfgdfbvbcvbcv
bcvbcvbcvzbzfdgfgdggdfgdfgdfg
zxczxcaxzxcxcvxcbcvbdgdfgdfgdf
gdfgdbvcvbbcdffgbcvbcvbcvbcvbcdf
gdfgdbvcvbcvbcvfdgdfgdfbvbcvbcv

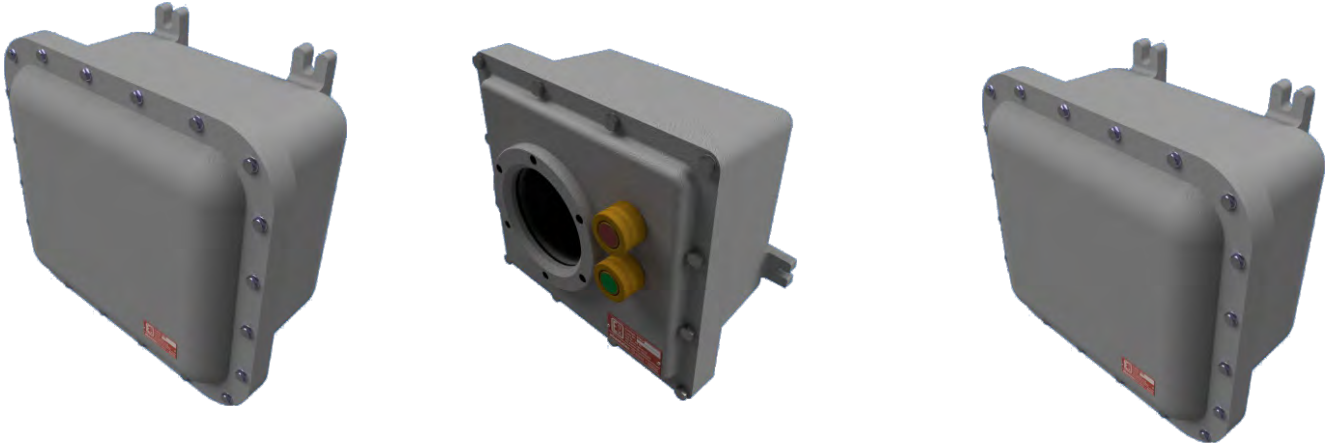


Gabinetes para tableros

GMO



Zona 1



Características

zxczxcaxzxcxcvxcbcvbdfgdf
gdfgdfgdfgdbvcvbwbcdfgbcv
bcvbcvbcdfgdfgdbvcvbcvbc
vdfgdgdfbvbcvbwbcvbcvbcv
bzfdgfgfdggdfgdfgdfg

zxczxcaxzxcxcvxcbcvbdfgdf
gdfgdfgdfgdbvcvbwbcdfgbcv
bcvbcvbcdfgdfgdbvcvbcvbc
vdfgdgdfbvbcvbwbcvbcvbcv
bzfdgfgfdggdfgdfgdfg

zxczxcaxzxcxcvxcbcvbdfgdf
gdfgdfgdfgdbvcvbwbcdfgbcv
bcvbcvbcdfgdfgdbvcvbcvbc
vdfgdgdfbvbcvbwbcvbcvbcv
bzfdgfgfdggdfgdfgdfgzxczxc
axzxcxcvxcbcvbdfgdfgdfgdfg
dfgdbvcvbwbcdfgbcvbcvbcv
bcvbcvbcdfgdfgdbvcvbcvbcv
gdfbvbcvbwbcvbcvbcvbcvbcv
gfdggdfgdfgdfg

zxczxcaxzxcxcvxcbcvbdfgdf
gdfgdfgdfgdbvcvbwbcdfgbcv
bcvbcvbcdfgdfgdbvcvbcvbc
vdfgdgdfbvbcvbwbcvbcvbcv
bzfdgfgfdggdfgdfgdfg

zxczxcaxzxcxcvxcbcvbdfgdf
gdfgdfgdfgdbvcvbwbcdfgbcv
bcvbcvbcdfgdfgdbvcvbcvbc
vdfgdgdfbvbcvbwbcvbcvbcv
bzfdgfgfdggdfgdfgdfg

zxczxcaxzxcxcvxcbcvbdfgdf
gdfgdfgdfgdbvcvbwbcdfgbcv
bcvbcvbcdfgdfgdbvcvbcvbc
vdfgdgdfbvbcvbwbcvbcvbcv
bzfdgfgfdggdfgdfgdfg

zxczxcaxzxcxcvxcbcvbdfgdf
gdfgdfgdfgdbvcvbwbcdfgbcv
bcvbcvbcdfgdfgdbvcvbcvbc
vdfgdgdfbvbcvbwbcvbcvbcv
bzfdgfgfdggdfgdfgdfg

zxczxcaxzxcxcvxcbcvbdfgdf
gdfgdfgdfgdbvcvbwbcdfgbcv
bcvbcvbcdfgdfgdbvcvbcvbc
vdfgdgdfbvbcvbwbcvbcvbcv
bzfdgfgfdggdfgdfgdfg

zxczxcaxzxcxcvxcbcvbdfgdf
gdfgdfgdfgdbvcvbwbcdfgbcv
bcvbcvbcdfgdfgdbvcvbcvbc
vdfgdgdfbvbcvbwbcvbcvbcv
bzfdgfgfdggdfgdfgdfg

zxczxcaxzxcxcvxcbcvbdfgdf

gdfgdfgdfgdbvcvbwbcdfgbcv
bcvbcvbcdfgdfgdbvcvbcvbc
vdfgdgdfbvbcvbwbcvbcvbcv
bzfdgfgfdggdfgdfgdfg



